

Unmatched territory.  
Unmatched luxury.



# NAVION

QUALITY INNOVATION SERVICE

**WINNEBAGO**



**On the Cover:** Stellar Deluxe Graphics  
**Interior:** 24J Harmony with Columbian Walnut wood and White High Gloss Cabinetry

## The Ultimate Class C Experience

When it first appeared on the scene, the Winnebago® Navion® set a new benchmark in luxury and performance for compact Class C motorhomes. Today's Navion is even better, combining the power, efficiency and latest safety features of its Mercedes-Benz® Sprinter chassis with a host of enhancements to the coach itself.

Each of the three floorplans features a slideout to boost interior living space, plus our SuperShell™ Sleeper Deck to ensure quieter, more comfortable driving and sleeping. The 2,000-watt pure sine wave inverter and optional dual lithium batteries, plus the 200-watt solar panels and larger holding tanks, extend your off-grid capability.

With new colorways, amenities, and a host of refinements throughout, the Navion is ready to take you just about anywhere in style and comfort.



In addition to providing a cozy sleeping area, the SuperShell Sleeper Deck provides additional thermal and acoustic insulation on the road and in camp.



Optional theater seating (24D, 24J) includes footrests and separate swivel tables, as well as additional storage for the swivel tables on each side. (photo from 24D Harmonious interior)



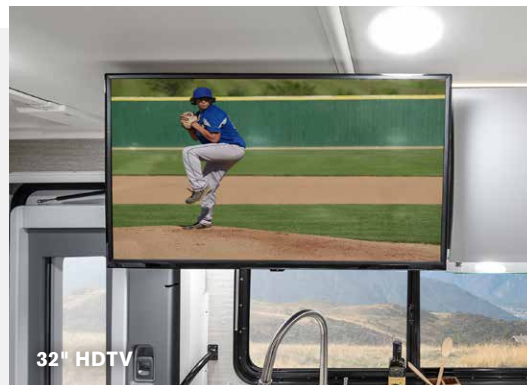
The driver-side slideout and extendable footrests make the U-shaped dinette (24D, 24J) the perfect place to relax and take in a movie on the 32" HDTV.



In camp, the lounge area becomes the heart of the Navion. Settle in to the U-shaped dinette with footrests (or TrueComfort+ sofa and table on the 24V) to eat, relax, play a game or tune in to the 32" HDTV. Opt for the available entertainment package with smart Blu-ray player and Bluetooth® premium soundbar, add the optional theater seating (24D, 24J) with footrests and dual swivel tables, and your Navion becomes your own personal theater. The comfortable cab seats swivel to provide additional seating, and a sofa with pedestal table provides even more seating in the 24D. Standard 110V, 12V, and USB charging outlets in the lounge, front bunk and bedroom keep your devices charged, and our exclusive roof access port makes it easy to wire exterior devices to the inside of the coach.



U-shaped dinette



32" HDTV



Swiveling cab seats



Theater seating with swivel tables (24D, 24J)  
 (photo from 24D Harmonious interior)



Whether you're feeding hungry troops or making a gourmet dinner for two, the well-designed Navion galley brings a touch of home with you on the road. The larger compressor-driven residential refrigerator lets you bring along your favorite foods, doesn't use LP (so it doesn't have to be level to operate), and is so efficient it can be operated off the batteries alone.

The dual-burner induction/LP cooktop handles two pans at once, and the microwave/convection oven is great for heating and even baking. Your mobile kitchen also includes a double-bowl stainless steel sink to ease cleanup duty, and a sink cover/cutting board to increase counter space. Lighted, soft-close drawers make it easy to find cookware, while the soft toe kick and overhead accent lighting provide soothing ambient and task lighting. The Navion even includes a cold-water purification system for additional peace of mind when traveling.



Dual-burner LP/induction cooktop



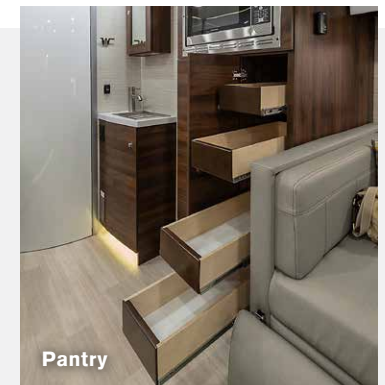
Microwave/convection oven



Lighted, soft-close drawers



Stainless steel sink

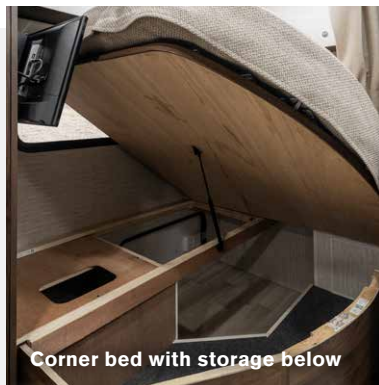


Pantry



Depending on your choice of floorplan, your Navion will come equipped with a comfortable corner bed with the FROLI® Deluxe Sleep System and storage below (24J), our Murphy+ bed with Euro-suspension system (24D), or our Flex Bed System that quickly converts from twin beds to a king bed (24V). Every Navion includes a wardrobe cabinet, and the 24J, 24V also feature Anything Keeper™ drop down storage for smaller items above the rear bed, as well as a 24" bedroom LED HDTV. Up front, the enhanced thermal and acoustic insulation of our SuperShell Sleeper Deck makes the overhead bunk a prime spot for shuteye.

The efficient Truma AquaGo® recirculating water heater, paired with the Oxygenics® flexible showerhead, makes showering a joy in the Navion. You'll also find a powered roof vent, skylight, retractable self-cleaning shower screen, lavatory and medicine cabinets in the bath, plus new toe kick lighting for nighttime use.



Corner bed with storage below



Anything Keeper storage



Overhead bunk



Shower



Vanity



Piloting the Navion has never been better, thanks in part to the latest Mercedes-Benz convenience and safety features. **DISTRONIC PLUS®** takes cruise control to the next level, holding speed and maintaining a set distance from vehicles in front. **Active Lane Keeping Assist** warns you of unplanned lane departures, and can guide you back into your lane, and **Active Brake Assist** helps avoid collisions with pedestrians or vehicles in front of you.

Your Navion also comes with powered and heated cab seats, a multi-function steering wheel with infotainment center controls, dash charging station with wireless charging, and a 10.25" MBUX® infotainment center with "Hey Mercedes" capability, navigation, Wi-Fi hotspot, and rear color camera.



Cab seats



10.25" MBUX infotainment center



Multi-function steering wheel

WINNEBAGO  
**NAVION** / Exterior



Campsite set-up is also easier, thanks to the 16' armless powered patio awning with LED lights you can control via smartphone app. Our exclusive pass-through storage (24D, 24J) handles larger gear, while the easy-to-clean Winnebago-made rotocast storage compartments help keep smaller items organized. The secure, double-latching Euro-style door blends perfectly with the attractive deluxe graphics or full-body paint, making the view from outside your Navion just as nice as it is on the inside.



Awning LED lights



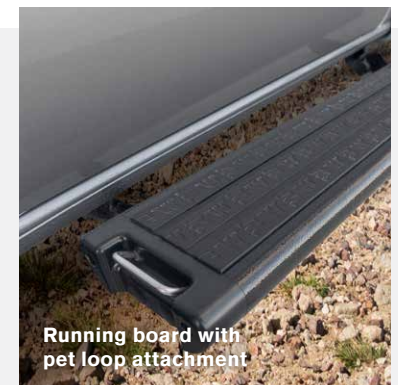
Exterior storage



Entry screen door



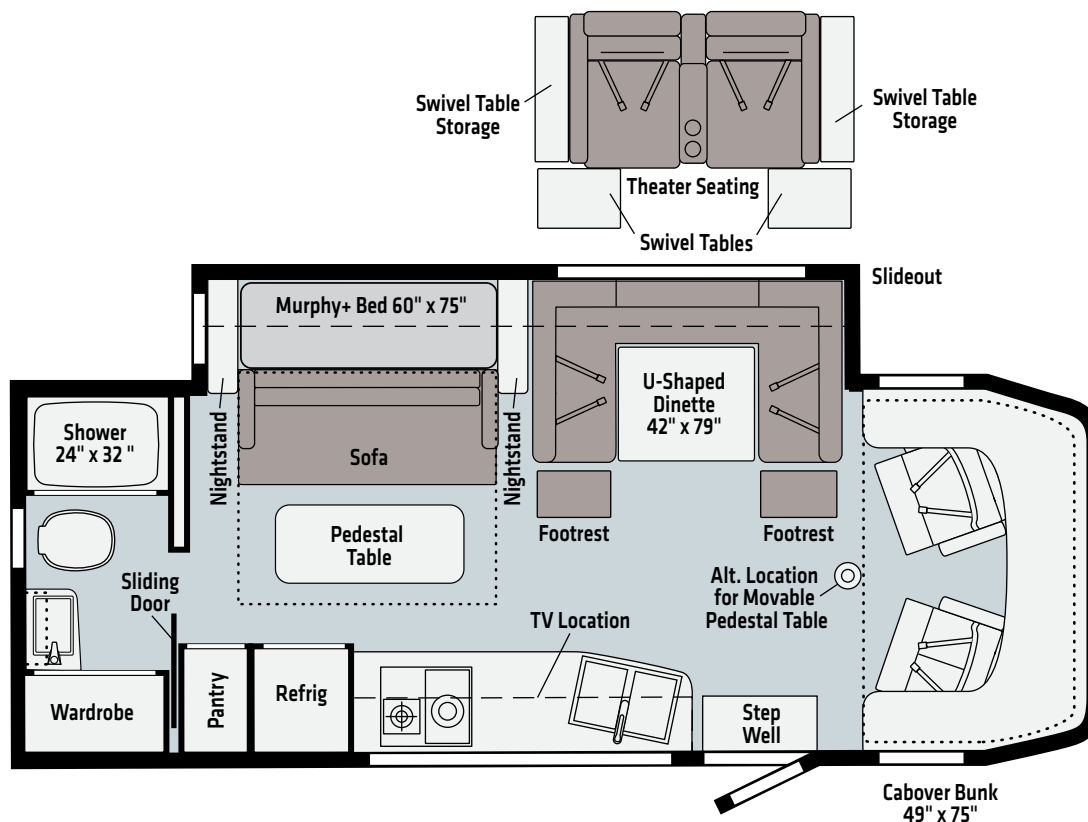
Exterior wash station



Running board with pet loop attachment



# 24D



Ultrafabrics  
 UF2 Premium  
 Leatherette

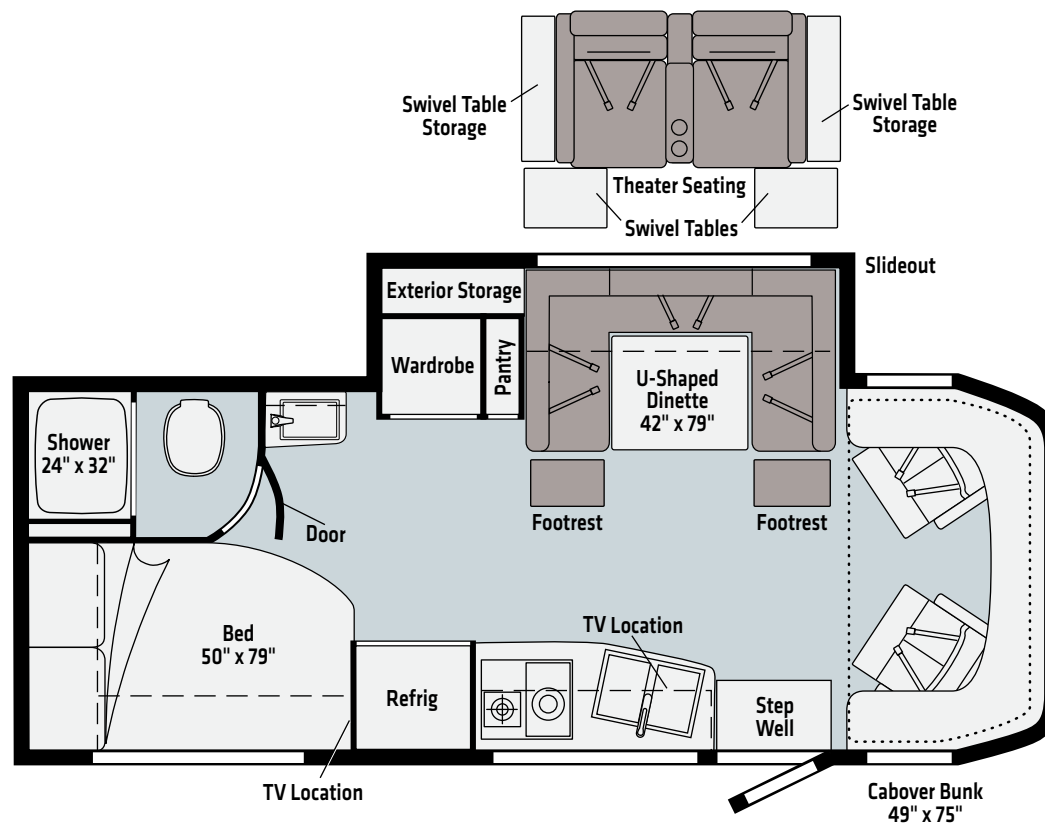
Vinyl

Dashed lines denote overhead storage areas. Floorplans and specifications are also available online at [Winnebago.com](http://Winnebago.com)





24J



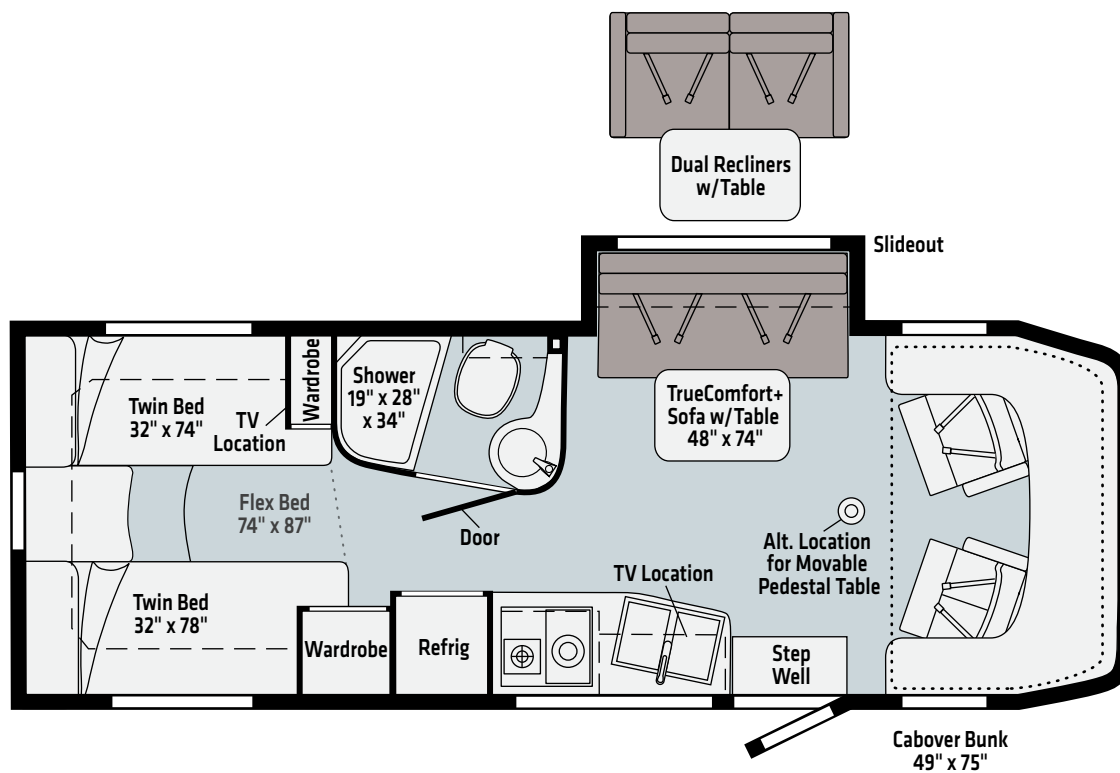
Ultrafabrics  
UF2 Premium  
Leatherette

Vinyl

Dashed lines denote overhead storage areas. Floorplans and specifications are also available online at [Winnebago.com](http://Winnebago.com)



# 24V



Ultrafabrics  
 UF2 Premium  
 Leatherette

Vinyl

Dashed lines denote overhead storage areas. Floorplans and specifications are also available online at [Winnebago.com](http://Winnebago.com)

WINNEBAGO  
**NAVION** / Exterior Graphics



**Stellar**  
STANDARD GRAPHICS



**Mineral II**  
FULL-BODY PAINT



**Bay Mist II**  
FULL-BODY PAINT



**Tuscan**  
FULL-BODY PAINT

## Harmony



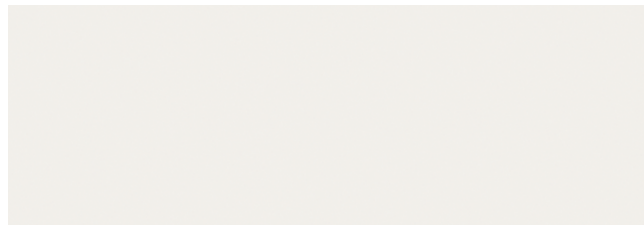
Ultrafabrics UF2 Premium Leatherette



Wall Board



Bed Cover

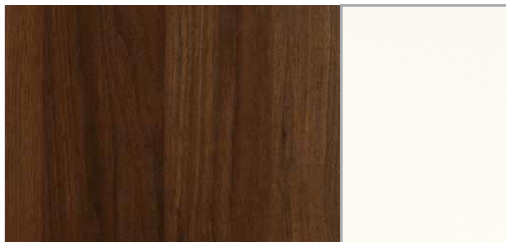


Countertop



Vinyl Flooring

## Wood



Columbian Walnut w/White High Gloss

*Winnebago® reserves the right to change décor materials and specifications without notice or obligation.*

## Harmonious



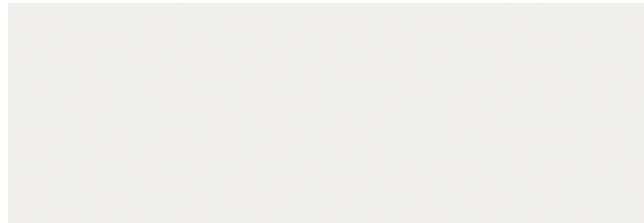
Ultrafabrics UF2 Premium Leatherette



Wall Board



Bed Cover



Countertop



Vinyl Flooring

## Wood



Columbian Walnut

*Winnebago® reserves the right to change décor materials and specifications without notice or obligation.*



WEIGHTS & MEASURES	24D	24J	24V
Length	25'6"	25'6"	25'6"
Exterior Height <sup>1</sup>	11'	11'	11'
Exterior Width	7'6.25"	7'6.25"	7'6.25"
Exterior Storage (cu.ft.)	30.0	43.0	33.6
Awning Length	16'	16'	16'
Interior Height	6'8"	6'8"	6'8"
Interior Width	7'3"	7'3"	7'3"
Freshwater Tank Capacity <sup>2</sup> (gal)	30	37	31
Water Heater Capacity	Continuous	Continuous	Continuous
Holding Tank Capacity – Black <sup>2</sup> (gal)	41	41	41
Holding Tank Capacity – Gray <sup>2</sup> (gal)	41	41	41
LP Capacity <sup>3</sup> (lbs.)	50.76	50.76	50.76
Fuel Capacity (gal.)	24.5	24.5	24.5
GCWR <sup>4</sup> (lbs.)	15,250	15,250	15,250
GVWR (lbs.)	11,030	11,030	11,030
GAWR – Front (lbs.)	4,410	4,410	4,410
GAWR – Rear (lbs.)	7,720	7,720	7,720
Wheelbase	170"	170"	170"

## Mercedes-Benz® Sprinter Chassis

3.0 L 6-cylinder, 188-hp, turbo-diesel engine 7G-Tronic automatic transmission, 220-amp. alternator

Adaptive ESP technology

Hydraulic brakes w/ABS

LED headlights w/high beam assist

2-point electric stabilizing system

Trailer hitch<sup>5</sup> 5,000-lb. drawbar/500-lb. maximum vertical tongue weight w/7-pin connector

Stylized aluminum wheels

### OPTIONAL EQUIPMENT

Hydraulic leveling jacks w/automatic controls (front and rear)

## Cab Conveniences

MBUX® touchscreen multimedia infotainment center w/navigation, Wi-Fi hotspot, intelligent voice control and rear camera

Airbags driver, passenger, side and curtain

Heated power control cab seats armrest, adjustable lumbar support, headrest, recline, slide, and manual swivel

3-point seat belts

Climate control

Leather-wrapped steering wheel

Power door locks w/remote

Power windows

Power mirrors w/defrost and turn signals

DISTRONIC PLUS® (adaptive cruise control)

Active brake assist

Power assist steering w/tilt wheel

Active lane keeping assist

Rain sensor w/integrated wet wiper system

Hill start assist

Crosswind assist

Traffic sign assist

Attention assist

12V/USB powerpoints

Folding windshield and cab window blinds

Dash appliqué package

2 cab seat lounge cushions

## Interior

32" HDTV

LED lights

Satellite system ready

Amplified digital HDTV antenna

Powered roof vent rain cover, electric lift, remote control, thermostat operation (front bunk)

MCD® solar/blackout roller shades

Systems monitor panel

Tinted coach windows

Assist bar

Vinyl flooring throughout

Soft vinyl ceiling

110V/12V/USB charging stations

Roof wiring access port

### OPTIONAL EQUIPMENT

Dual recliners w/table (24V)

Dual Pane Acrylic Windows

Theater seating (24D, 24J)

Entertainment System Blu-ray disc player and JBL® Soundbar

## Galley

Laminate countertops

Microwave/convection oven w/touch control

2-burner induction and LP range cooktop

Mini blinds

Double-door 12V compressor refrigerator/freezer

Cold water filtration system (galley)

Water-pump switch w/light

Pantry (24D, 24J)

Cabinets w/accent lighting

Lighted soft close drawers

Integrated paper towel holder

Double stainless steel sink w/2 sink covers

Toe kick lighting

## Bath

Shower 24" x 32" (24D, 24J)

Shower 19" x 28" x 34" (24V)

Retractable, self-cleaning shower screen

Oxygenics® flexible showerhead

Shower skylight

Porcelain toilet w/foot pedal and sprayer (24J, 24V)

Composite Toilet (24D)

Powered roof vent w/rain cover

Lavatory cabinet  
Medicine cabinet  
Mini blinds (24D)  
Towel rack (24V)  
Towel bar(s) (24J, 24V)  
Tissue holder  
Removable clothes rod  
Robe hook(s)  
Integrated facial tissue holder  
Toe kick lighting

## Bedroom

**Murphy+ bed** w/deluxe queen mattress, Euro-suspension system, gel foam topper (24D)  
**Corner bed** w/headboard, foam mattress, mattress cover and access to storage below (24J)  
**Flex Bed System** twin beds/king bed w/foam mattresses (24V)  
**FROLI® deluxe sleeping system** (24J, 24V)  
**MCD® blackout roller shades**  
**Wardrobe cabinet**  
**Metal clothes rod**  
**Room divider curtain**  
**Anything Keeper™** drop down storage above bed (24J, 24V)  
**110V/12V/USB charging stations** (24J, 24V)  
**110V/USB charging station** (24D)  
**24" LED HDTV** (24J, 24V)

## Exterior

**Automatic entrance door step**  
**LED porch light** w/interior switch  
**Stepwell light** w/interior switch  
**Front and rear mud flaps**  
**Aluminum cab steps** w/logoed tread and floor attachment  
**Powered patio awning** w/LED lights and Bluetooth™ control  
**Large pass-through storage compartment** (24D, 24J)  
**Ladder**

## Heating & Cooling System

**15,000 BTU air conditioner** w/heat pump  
**20,000 BTU low-profile ducted furnace**

## Electrical System

**Service Center** light, cable TV input, 30-amp. power cord, portable satellite dish hookup, QuickPort® service connection hatch  
**Automatic dual battery charge control**  
**Exterior AC duplex**  
**Exterior antenna jack**  
**Generator auto transfer switch**  
**Battery disconnect system** (coach)  
**AC/DC load center/converter unit**  
**2 deep-cycle, Group 31 RV batteries**  
**3,600-watt Cummins Onan® MicroQuiet™ LP generator**  
**2,000-watt pure sine wave DC/AC inverter**  
**(2) 100-watt solar panel/battery charger** w/controller, junction box, and plug for additional portable solar panel

## OPTIONAL EQUIPMENT

**Lithium Ion Smart Batteries** w/Bluetooth control  
**3,200-watt Cummins Onan® Diesel generator**

## Plumbing System

**Service Center** color-coded labels, pressurized city water hookup/tank diverter valve, drainage valves, exterior wash station w/lighted pump switch  
**Truma AquaGo® Comfort Plus Tankless water heater**  
**TrueLevel™ holding tank monitoring system**  
**Heated drainage system**  
**10' sewer hose**  
**Winterization Package** water heater bypass valve and siphon tube  
**On-demand water pump**  
**Lockable water tank fill**

**Sewage pump macerator** (24V)  
**Permanent-mount LP tank** w/gauge  
**LPG accessory connection** (patio area)  
**Black holding tank flushing system**

## Safety

**LPG leak, smoke and carbon monoxide detectors**  
**Fire extinguisher**  
**Ground fault interrupter**  
**Child seat tether anchor** only available on the U-shaped dinette (24D, 24J)  
**High-mount brake lamps**  
**Daytime running lamps**

## Warranty<sup>5</sup>

**12-month/15,000-mile limited warranty<sup>6</sup>**  
**36-month/36,000-mile limited warranty on structure<sup>6</sup>**  
**10-year limited parts-and-labor warranty on roof skin<sup>6</sup>**

### FOOTNOTES

- The height of each model is measured to the top of the tallest standard feature and is based on the curb weight of a typically equipped unit. The actual height of your vehicle may vary by several inches depending on chassis or equipment variations. Please contact your dealer for further information.
- Capacities are based on measurements prior to tank installation. Slight capacity variations can result due to installation applications.
- Capacities shown are tank manufacturer's listed water capacity (W.C.). Actual filled LP capacity is 80% of listing due to overfilling prevention device on tank.
- Actual towing capacity is dependent on your particular loading and towing circumstances which includes the GVWR, GAWR, and GCWR, as well as adequate trailer brakes. Please refer to the Operator's Manual of your vehicle for further towing information.
- See separate chassis warranty.
- See your dealer for complete warranty information.

NA Not Available

Not all items available in combination. See dealer for details.

Because features, specifications, equipment, and options may vary from those highlighted in this brochure, the buyer is responsible for confirming with the dealer the features, specifications, equipment, and options included on their specific vehicle. In addition, Winnebago's program of continuous product improvement may result in changes to vehicle specifications, equipment, model availability, and price without notice.